

Howard Hughes Medical Institute

## Hanna H. Gray Fellows Program

### **2020 PROGRAM ANNOUNCEMENT**

The Howard Hughes Medical Institute (HHMI) believes that the biggest challenges in science call for diverse perspectives and original thinking. Through the Hanna H. Gray Fellows Program, HHMI seeks to increase diversity in biomedical science by recruiting and retaining individuals from groups underrepresented in the life sciences. The program will support early career scientists with the potential to become leaders in academic research. Through their successful careers, HHMI Hanna Gray Fellows will inspire future generations of scientists from America's diverse talent pool.

Fellows will receive funding for their postdoctoral training and may continue to receive funding during their early career years as independent faculty. The program includes opportunities for career development, including mentoring and active involvement in the HHMI scientific community. The Institute will select and support up to 15 fellows in this competition. This grant competition is open to all eligible applicants and no nomination is required. **The competition opens September 12, 2019.**

Following the “people, not projects” philosophy of HHMI, the competition is open to basic science researchers and physician-scientists in all the biomedical and life science disciplines, including plant biology, evolutionary biology, biophysics, chemical biology, biomedical engineering, and computational biology. Fellows will have freedom to change their research focus and follow their own curiosity during the duration of the award.

## ELIGIBILITY:

- The program is open to individuals who:
  - are from gender, racial, ethnic, and other groups underrepresented in the life sciences, including those individuals from disadvantaged backgrounds.
  - are basic science researchers and physician-scientists in the biomedical and life science disciplines.
  - hold a PhD and/or MD (or equivalent), which must be conferred by the start of the grant term.
    - U.S. citizens must have a degree from a research institution in the U.S. (including Puerto Rico) or an international research institution.
    - Non-U.S. citizens and applicants with other nationalities must have a degree from a research institution in the U.S. (including Puerto Rico).
  - have been accepted to join a laboratory as a postdoctoral researcher at an academic research institution located in the U.S. (including Puerto Rico) at the time of the application due date.
- The postdoctoral training mentor must hold a tenured or tenure-track position (or equivalent) at an institution in the U.S. (including Puerto Rico).
- Applicants can have no more than 16 months of postdoctoral research experience at the time of the application due date.

## POSTDOCTORAL TRAINING PHASE:

Fellows will receive annual support of a \$70,000 salary for the initial year and a \$20,000 expense allowance, paid through a non-renewable grant to the training institution. This phase of the award is for a minimum of two and maximum of four years.

## FACULTY PHASE:

Fellows will receive \$250,000 in research funding and a \$20,000 expense allowance per year, paid through a non-renewable grant to the institution where they have attained a faculty position. This phase of the award has a maximum length of four years.

## CONDITIONS OF THE AWARD:

- Fellows in both postdoctoral training and faculty phases are required to devote at least 75% of their total effort to research.
- To transition to the faculty phase of the program, fellows must obtain a tenure-track (or equivalent) faculty position at a U.S. (including Puerto Rico) research institution with a doctoral-level graduate program in their area of interest.

- Fellows will be expected to attend an HHMI science meeting each year and provide an annual progress report.

## APPLICATION PROCESS:

Applicants can establish eligibility and submit an application via the HHMI online competition site [www.hhmi.org/research/application/fellow2020](http://www.hhmi.org/research/application/fellow2020) beginning September 12, 2019.

The deadline for applications is January 8, 2020, at 3:00 p.m. (ET). Mentor and reference letters must be received by January 15, 2020.

The application includes the following components:

- Summary of the applicant's educational and training record
- Personal statement relating past experiences and career goals
- Overview of the applicant's prior research experience
- A publication list with statements of significance
- Summary of the applicant's planned research for postdoctoral phase
- An evaluative statement provided by the applicant's research training mentor
- A statement of support with a training plan provided by the postdoctoral training mentor
- A curriculum vitae and list of prior trainees provided by the postdoctoral training mentor
- One additional letter of reference

## SELECTION OF FELLOWS:

HHMI will assess the applicant's potential for a career as an independent academic researcher and the quality of the training environment with the selected mentor. Finalists will be selected by late April 2020 and will be invited to make a scientific presentation to a panel of reviewers on June 22-25, 2020. The selection of awardees will be made by the end of June 2020. Awards may begin as early as September 15, 2020, but no later than January 19, 2021.

## ADDITIONAL INFORMATION:

Further details are available at [www.hhmi.org/hanna-h-gray-fellows](http://www.hhmi.org/hanna-h-gray-fellows). For questions, contact HHMI program staff at [fellows@hhmi.org](mailto:fellows@hhmi.org).



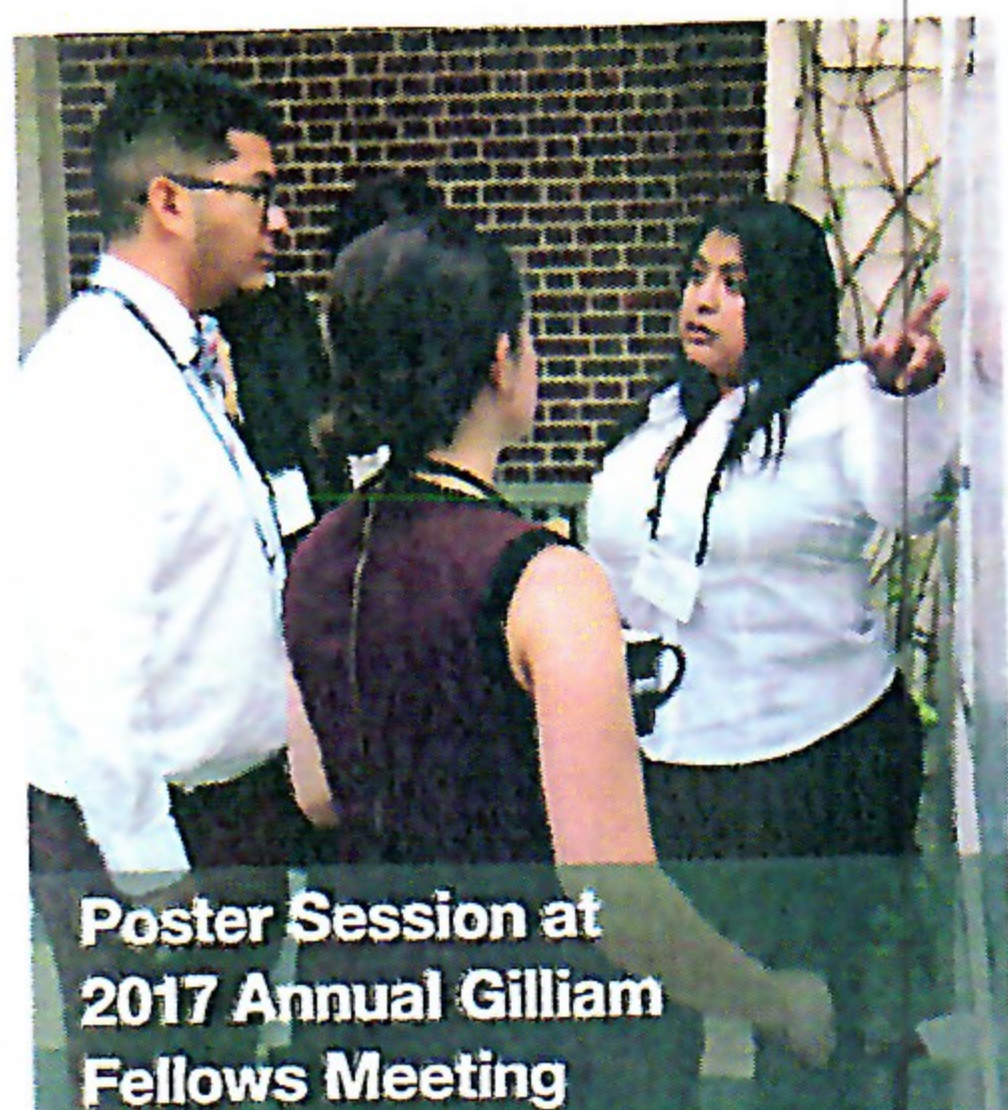
# Gilliam Fellowships for Advanced Study

Howard Hughes Medical Institute

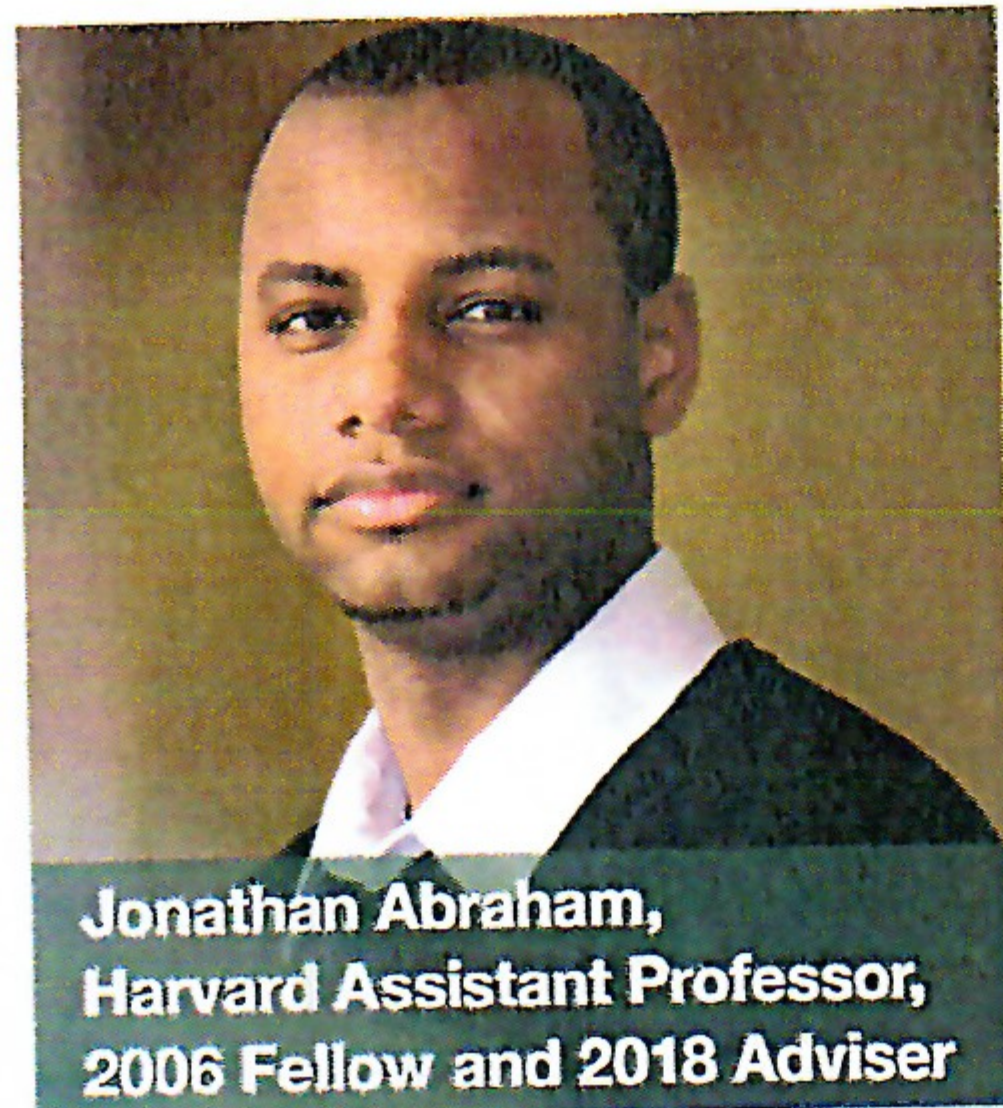
The goal of the Gilliam initiative is to increase the diversity among scientists who are prepared to assume leadership roles in science, particularly as college and university faculty. The program provides awards to pairs of students and their dissertation advisers who are selected for their scientific leadership and commitment to advance diversity and inclusion in the sciences.



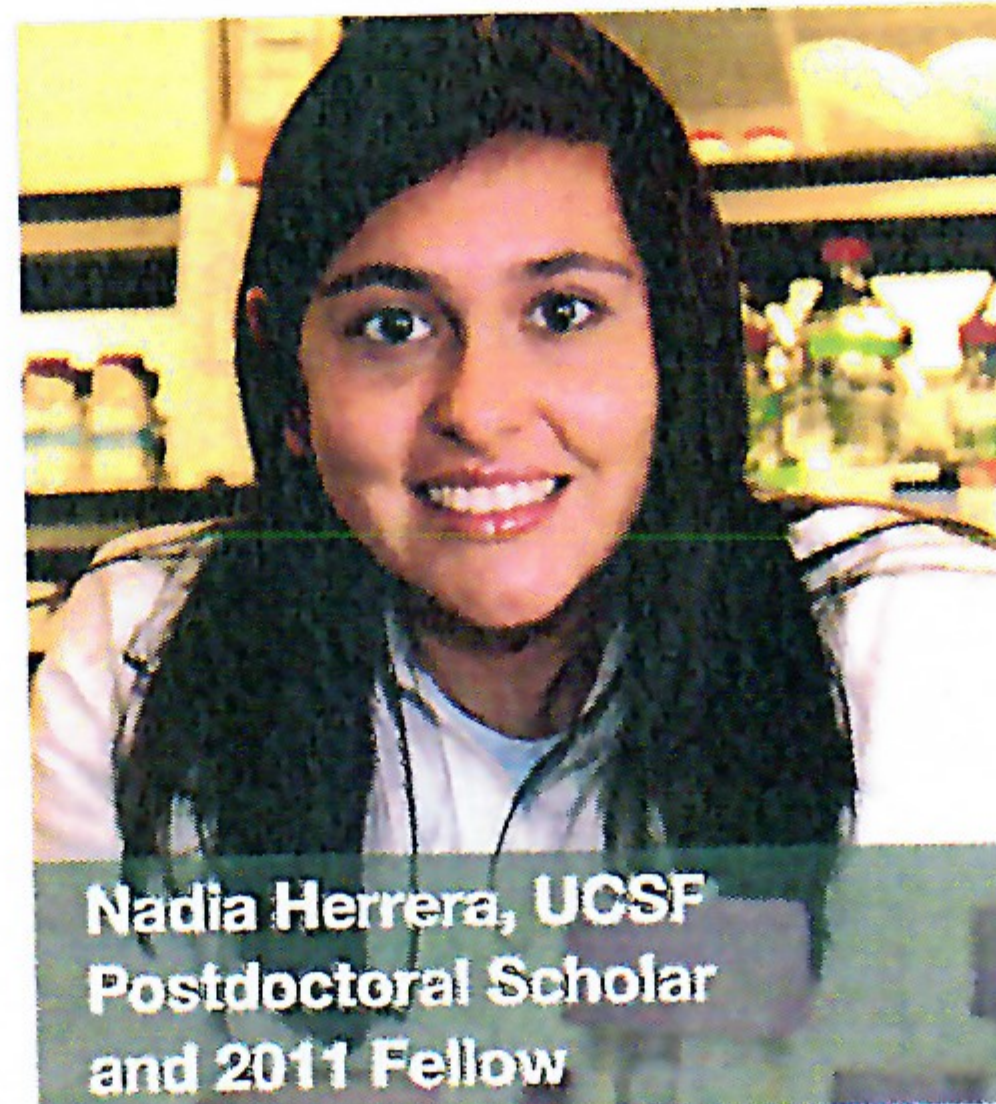
2017 Annual Gilliam Fellows Meeting



Poster Session at 2017 Annual Gilliam Fellows Meeting



Jonathan Abraham, Harvard Assistant Professor, 2006 Fellow and 2018 Adviser



Nadia Herrera, UCSF Postdoctoral Scholar and 2011 Fellow

**Adviser-student pairs** receive an annual award of \$50,000 for up to three years of dissertation research, which includes a fellow's stipend, educational allowance, institutional allowance (tuition and fees), and an adviser allowance (diversity and inclusion activities).

**Advisers:** Engage in thirty-hour, year-long, culturally-responsive training; build a community of advisers through webinars and in-person meetings; receive support to address challenges to diversity and inclusion at the graduate level.

**Fellows:** Enhance leadership skills in annual training; network with other trainees and senior scientists at the Gilliam annual meeting and at HHMI science meetings; receive support to participate in discipline-specific meetings, advanced courses, and other professional development events and activities.

## HOW TO APPLY & TIMELINE

### Nominations

Adviser-student pairs from eligible disciplines nominated by the HHMI-designated institutional representative.

### Eligibility

Students from racial, ethnic, or other underrepresented groups in the sciences, or alumni of the HHMI EXROP at the appropriate program stage of their PhD training.

**Nomination Due** October

**Application Due** January

**Fellows Notified** June

**Award Activation** September

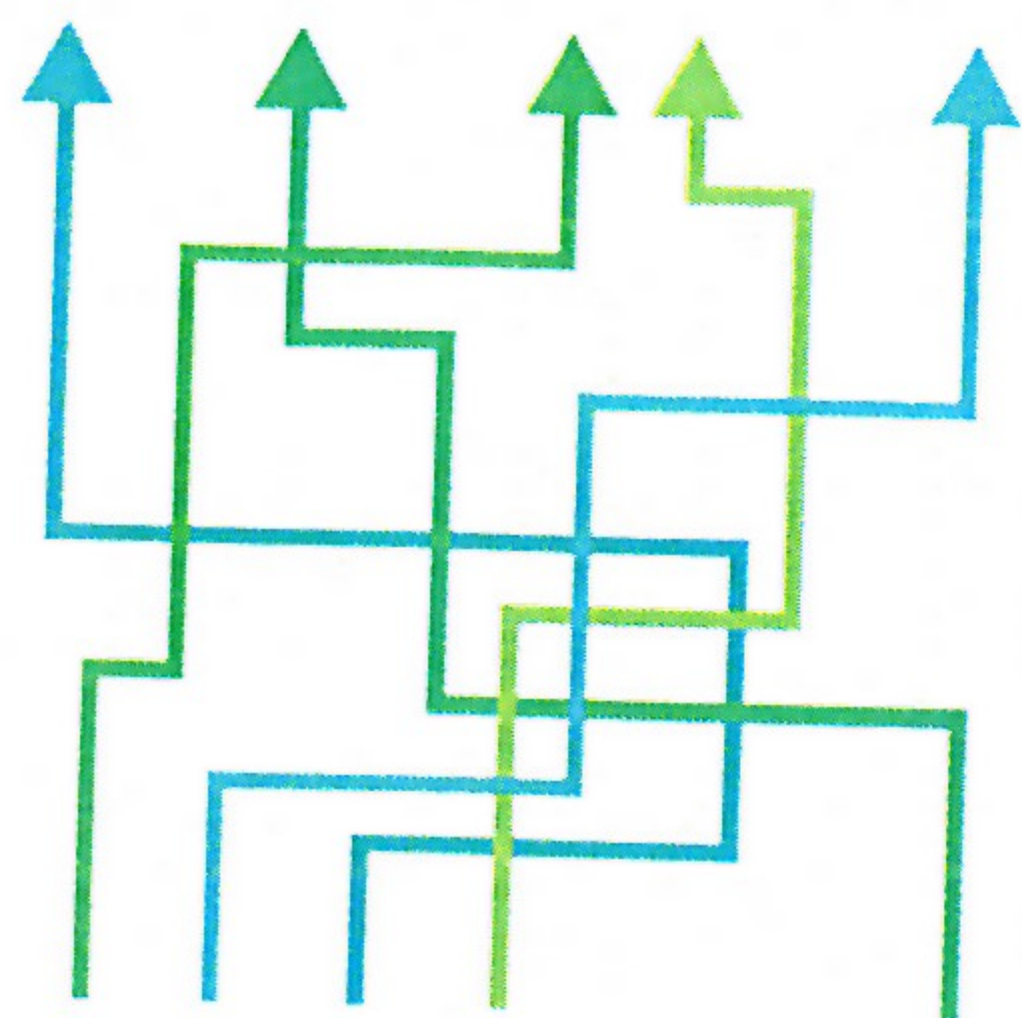
FOR FURTHER INFORMATION VISIT [www.hhmi.org/gilliam](http://www.hhmi.org/gilliam) • EMAIL [gilliam@hhmi.org](mailto:gilliam@hhmi.org)



# Hanna H. Gray Fellows Program

## Postdoctoral and Transition Award

Howard Hughes Medical Institute



The goal of the Hanna H. Gray Fellows Program is to increase diversity in the biomedical research community by recruitment and retention of individuals from groups underrepresented in the life sciences.

The successful academic careers of Hanna Gray Fellows will inspire the next generation of scientists.



2017 Hanna Gray Fellows



Christopher Barnes, 2017 Hanna Gray Fellow, California Institute of Technology



Chantell Evans, 2017 Hanna Gray Fellow, University of Pennsylvania

**The program includes** opportunities for career development, active mentoring, and involvement in the HHMI scientific community.

**Fellows receive support** of \$90,000 annually for up to four years of postdoctoral training and, if eligible, \$270,000 annually in their early career years as independent faculty.

### ELIGIBILITY AND TIMELINE

Open to applicants who:

- Are from gender, racial, ethnic and other groups underrepresented in the life sciences, including those from disadvantaged backgrounds.
- Hold a PhD and/or MD (or equivalent);
  - U.S. citizens must have a degree from a domestic or an international research institution.
  - Non-U.S. citizens must have a degree from a U.S. research institution.
- Have been accepted to join a laboratory as a postdoctoral fellow at a research institution in the U.S.

*Note U.S. institutions include Puerto Rico. All degrees must be conferred by the start of the award.*

**Competition Opens** September  
**Application Due** January  
**Semifinalists Notified** April  
**Fellows Selected** Late June  
**Award Activation** September–January